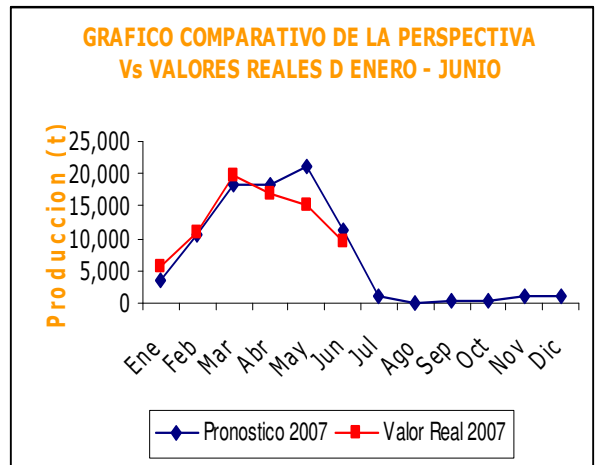
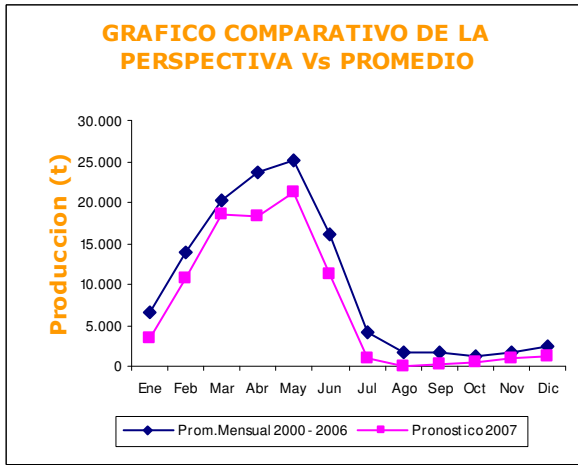
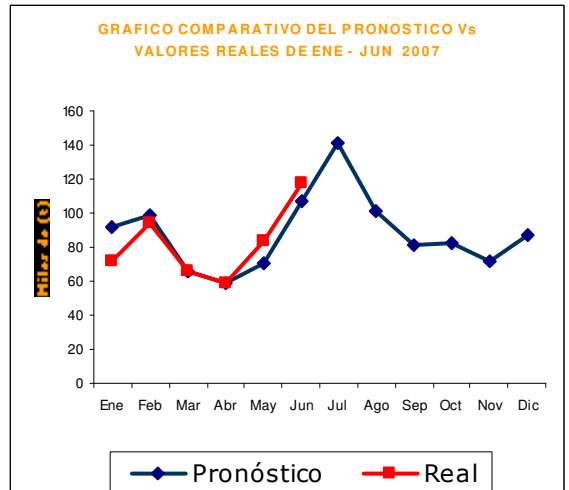
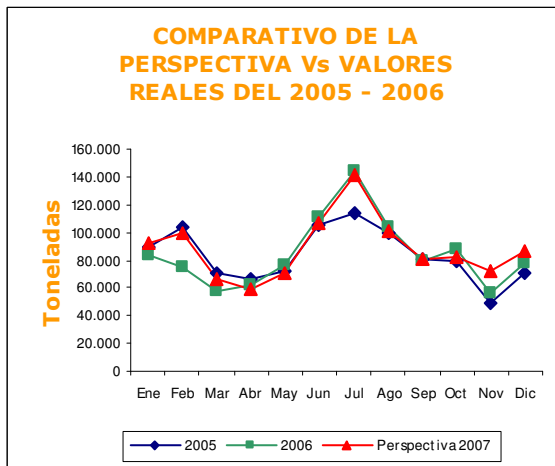


RESUMEN DE ESTUDIOS DE PRONÓSTICO: VARIOS CULTIVOS.

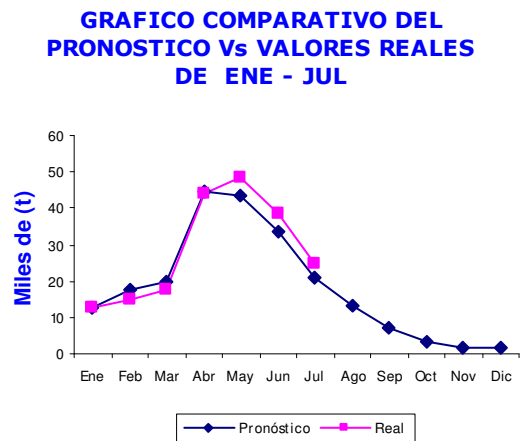
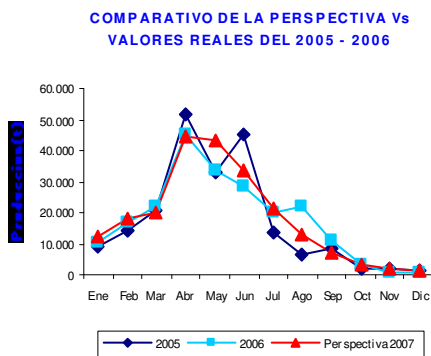
PAPA 2007: 3.3 millones(t)



MAÍZ AMARILLO DURO 2007: 1.1 millones(t)



ALGODÓN RAMA 2007: 219 mil (t)



MAIZ AMILACEO 2007: 245 mil (t)

COMPARATIVO DE LA PERSPECTIVA Vs VALORES REALES DEL 2005 - 2006

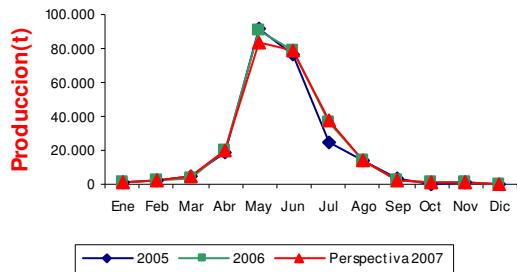
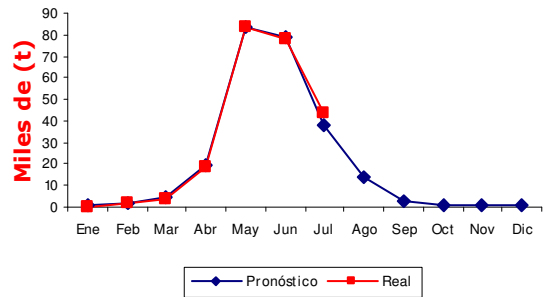


GRAFICO COMPARATIVO DEL PRONOSTICO Vs VALORES REALES DE ENE - JUL



TRIGO 2007: 190 mil (t)

GRAFICO COMPARATIVO DE LA PERSPECTIVA Vs VALORES REALES DEL 2005 - 2006

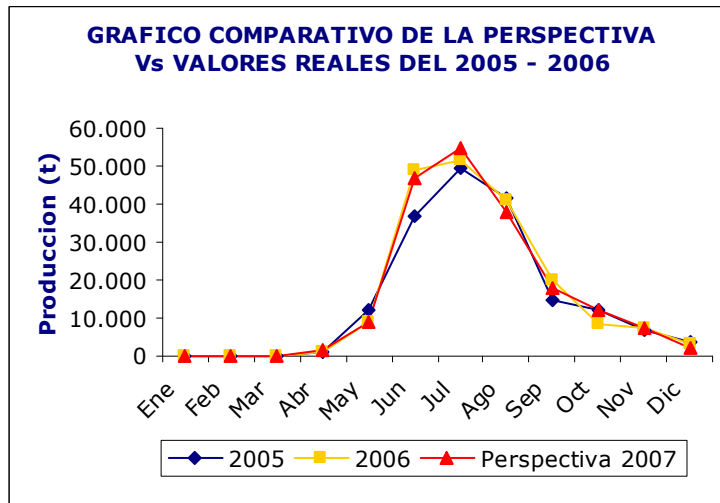


GRAFICO COMPARATIVO DE LA PERSPECTIVA Vs VALORES REALES DE ENE - JUL

